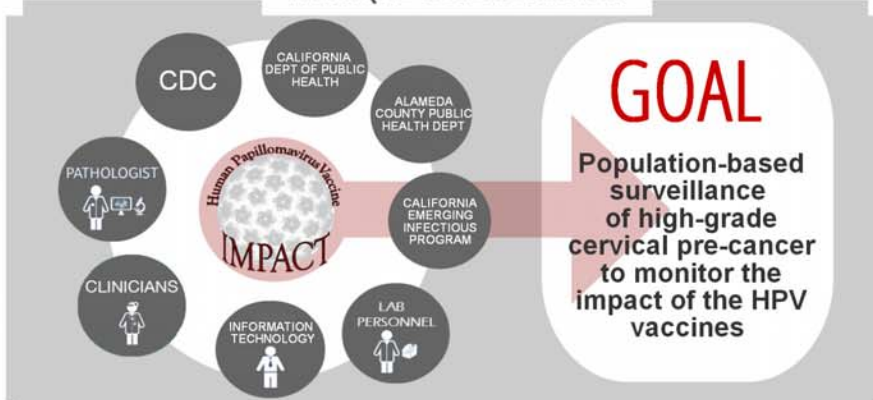


HPV-IMPACT UPDATE 2014

A UNIQUE COLLABORATION



GOAL

Population-based surveillance of high-grade cervical pre-cancer to monitor the impact of the HPV vaccines

ABOUT THE PROJECT

WHERE?

WHEN?

Surveillance began January 2008 and is expected to continue at least 10 years

WHO?

Adult females over 18 years of age living in Alameda County

HPV VACCINE IN THE NEWS



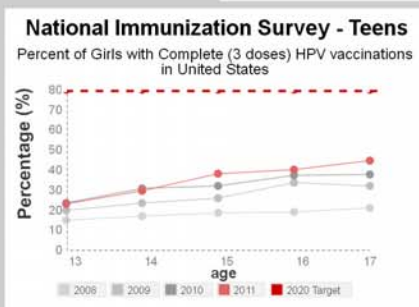
2013 **CERVICAL PRE-CANCER REPORTABLE**
Beginning Sept 2013, cervical pre-cancer, or CIN2/3/AIS, became reportable in Alameda County

56% **DECREASE IN VACCINE-TYPE HPV PREVALENCE**
Although US HPV vaccination rates for 2011 and 2012 show only 1/3 of girls age 13-17 having all 3 doses, decreases in vaccine-type HPV prevalence are greater than expected. (Markowitz et al., 2013, JID)

60% **DECREASE IN GENITAL WARTS CASES**
Since Australia rolled out its nationwide HPV vaccine campaign in 2007, the country has seen a large population-level decrease in genital warts cases. (Ali et al., 2013, BMJ)

2 **HPV DOSES MAY BE AS EFFECTIVE AS 3**
Females who received 2 doses of bivalent HPV vaccine had serum antibodies that were non-inferior to females who received 3 doses. (Dobson et al., 2013, JAMA)

VACCINE UPTAKE & GOALS



WHERE ARE WE NOW?
According to NIS-Teens, only 1/3 of girls are fully vaccinated with the HPV vaccine

2020 HEALTHY PEOPLE TARGET
80% of 13-15 year old females to be vaccinated with 3 doses of HPV vaccine

HPV VACCINE QUALITY MEASURE
The Healthcare Effectiveness and Data Information Set (HEDIS) measures percent of girls with 3 doses of HPV vaccine on or between the 9th and 13th birthday

IMPORTANT

Remember to routinely vaccinate all eligible girls and young women

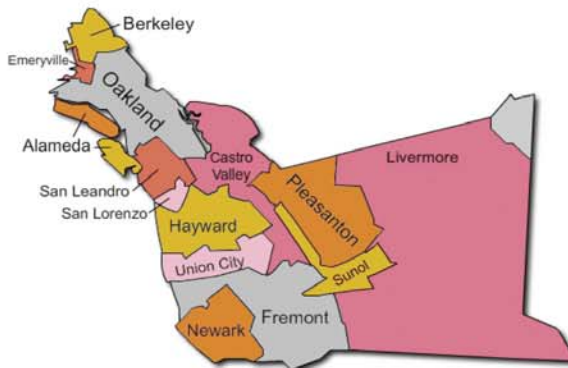
Findings to Date

surveillance-reported high-grade cervical pre-cancer between 2008-2012

WHERE ARE WE NOW?



Partnership with 18 laboratories or health care organizations serving Alameda County.



Map of cities in Alameda County

ALAMEDA COUNTY DATA

MEDIAN AGE @ DIAGNOSIS
31

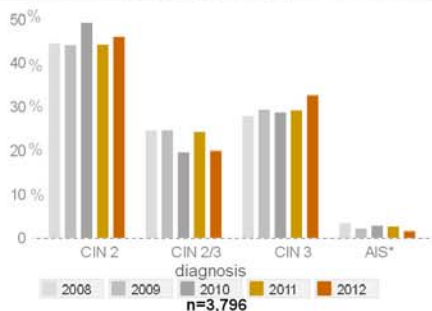
TESTED SPECIMENS
1020

CIN2/3/AIS Incidence

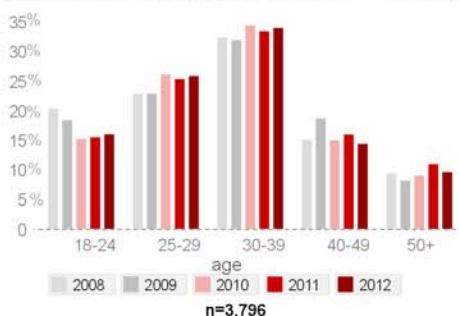
↓ 4% overall

↓ 23% in 18-24 years old

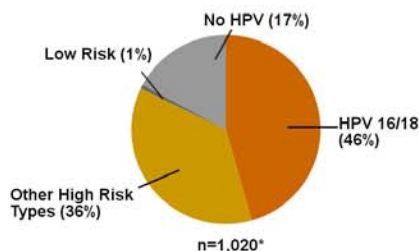
Proportion of Reported Cases by Diagnosis Alameda County



Proportion of Reported Cases by Age Alameda County



HPV Types Identified in Cervical Pre-cancer Alameda County



HPV CLASSIFICATION TYPE

Vaccine Types HPV 16 or 18
Other High Risk Types: HPV 26, 31, 33, 39, 45, 51, 52, 53, 56, 58, 59, 66, 67, 68, 69, 70, 73, IS 39
Low Risk Types: HPV 6, 11, 32, 40, 42, 43, 44, 54, 61, 62, 64, 71, 72, 74, 81, 83, 84, 87, 89

*Typing represents a sample of 18-39 year old women with available cervical tissue diagnosed at high-grade